



HERTFORD ST

MAYFAIR

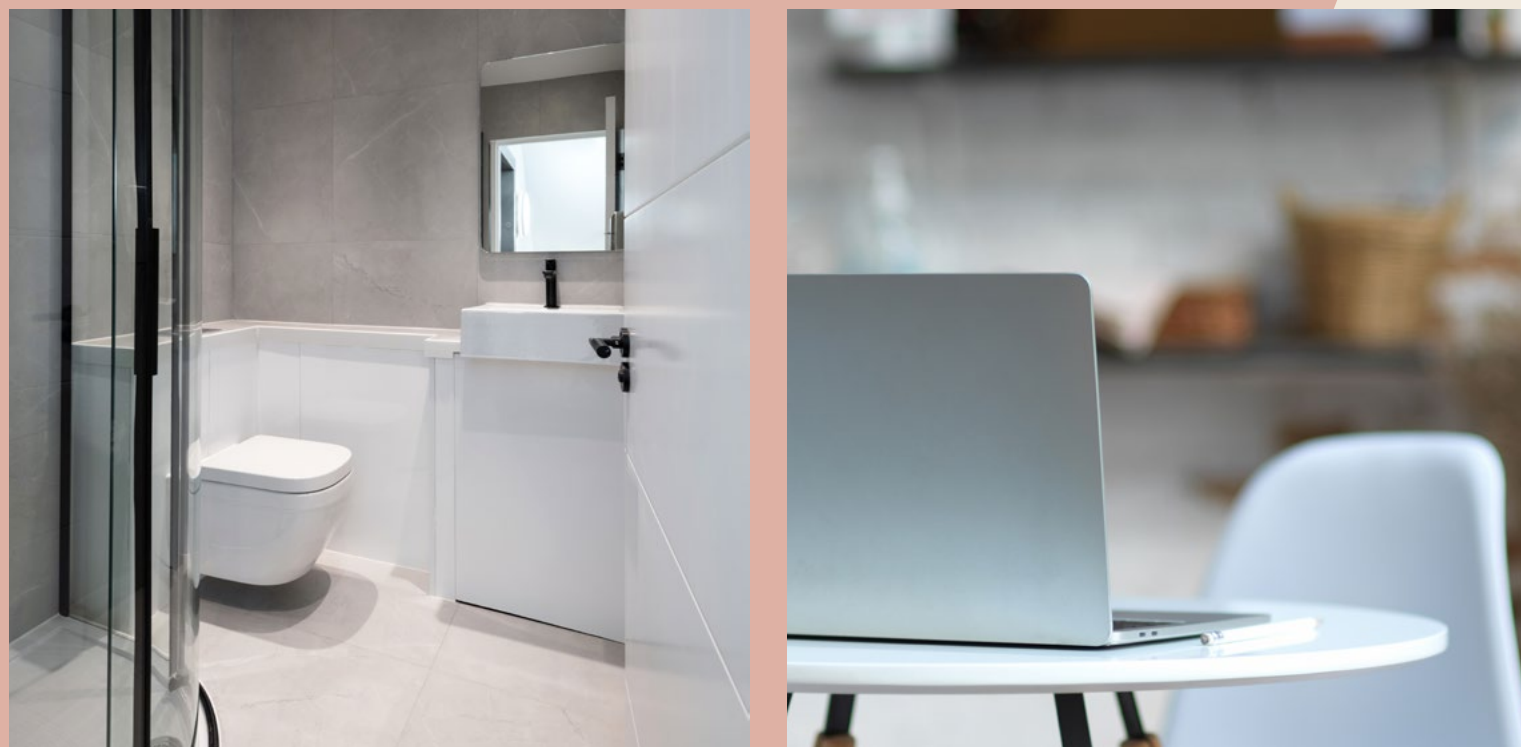
4,600 SQ FT OF STYLISH AND CONTEMPORARY
BOUTIQUE MAYFAIR WORKSPACE



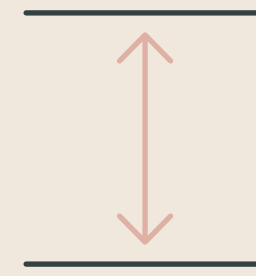
ABOUT

A unique and exclusive townhouse opportunity in a prime *Mayfair* location. Four floors of high performance office space with an impressive reception, luxury commuting facilities and private outdoor space.

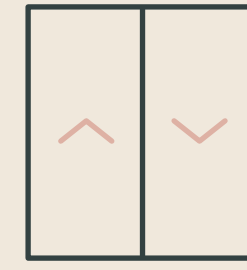
7 HERTFORD ST



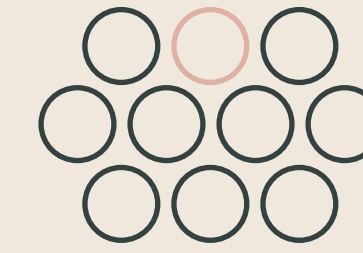
SUMMARY SPECIFICATION



2.8m floor to ceiling height



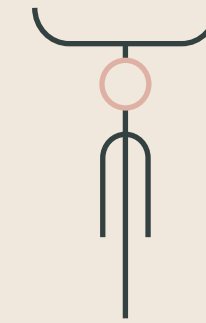
8 person passenger lift



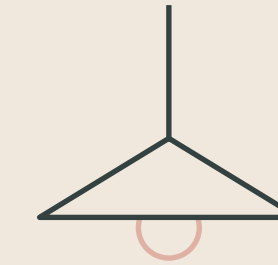
1:10 occupancy density



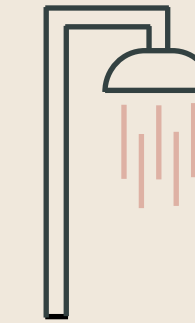
Private ground floor terrace



14 bike racks



LED lighting throughout



1 shower

ACCOMMODATION SCHEDULE

	Lower Ground	Ground [Reception]	Ground [Office]	First	Second	Third	TOTAL NIA
Sq ft	752	258	538	1,012	1,007	1,012	4,579
Sq m	70	24	50	94	94	94	426

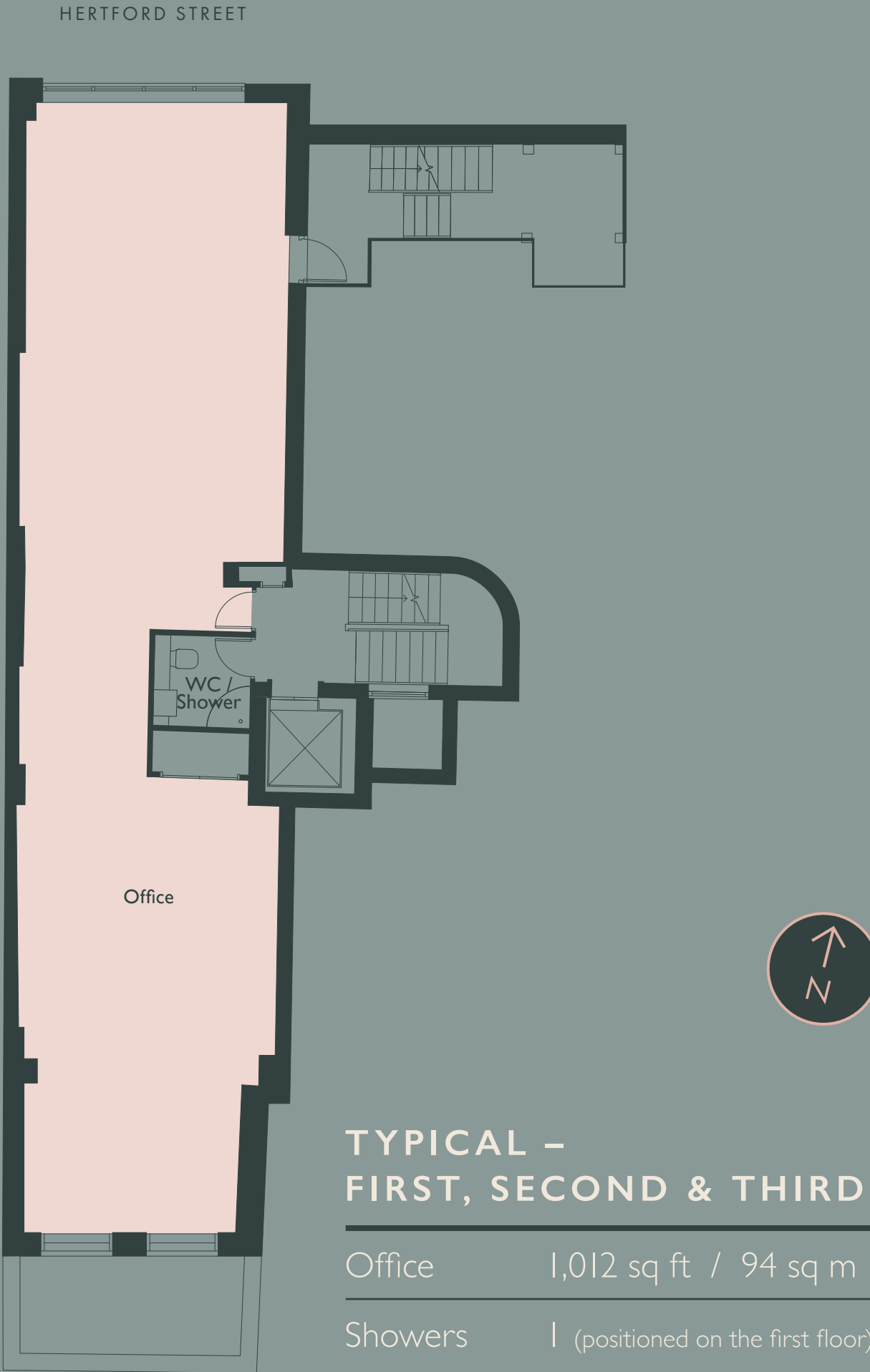
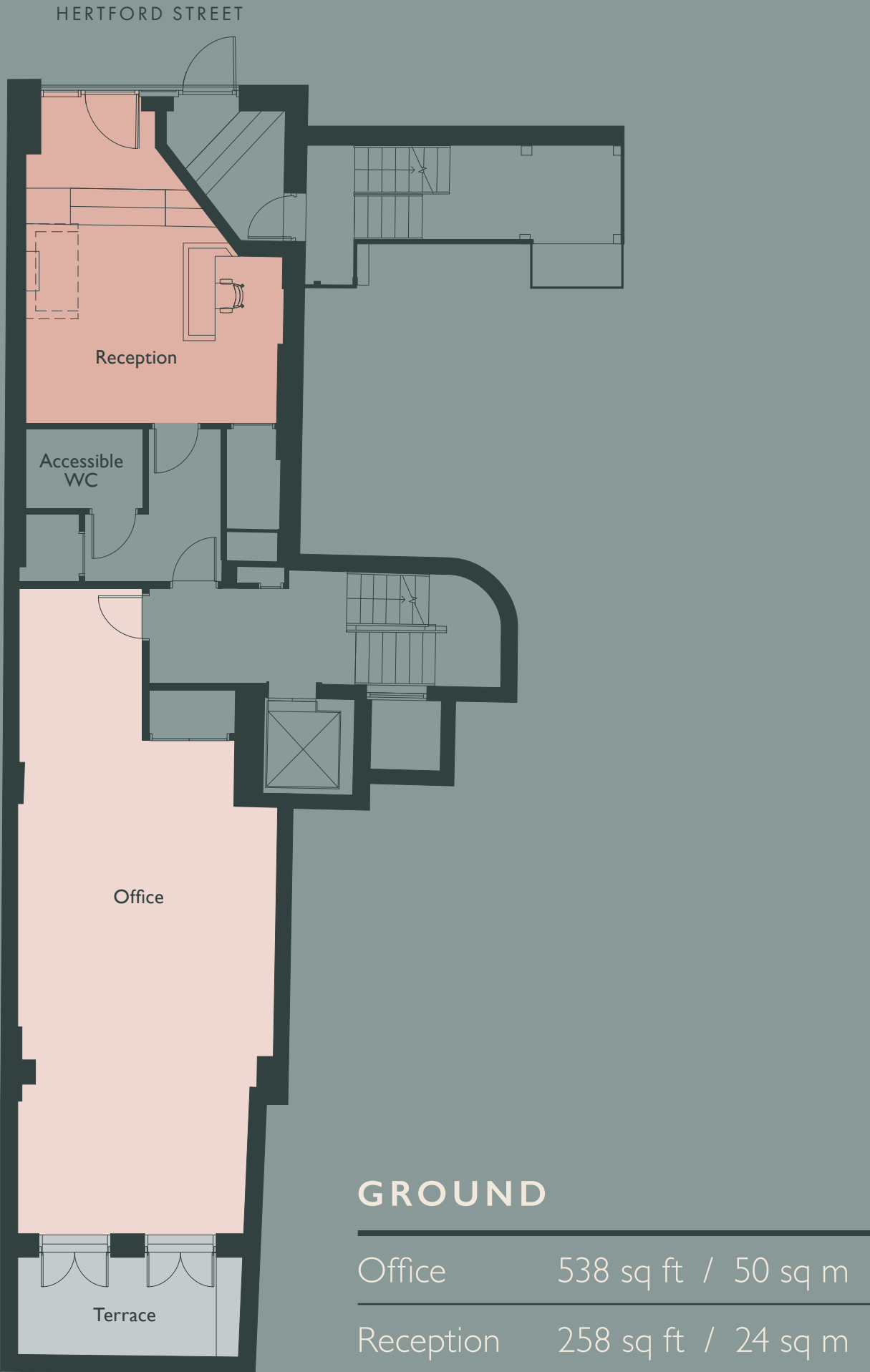
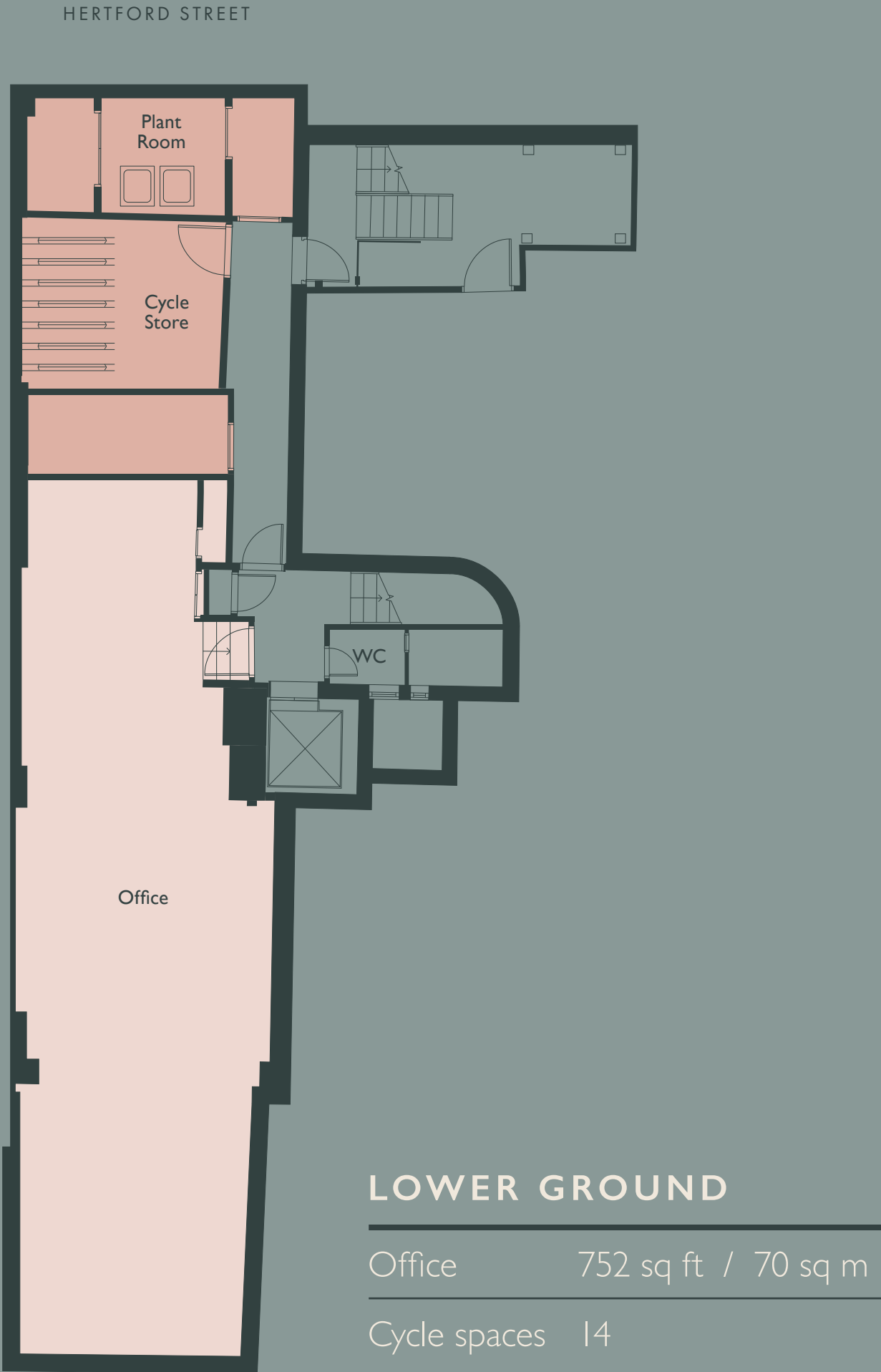
SECOND FLOOR



THIRD FLOOR



FLOORPLANS





LOCATION








An exceptional Mayfair position at the apex of two of London's best parks and with fantastic connections a short walk away. Explore the impressive roster of acclaimed restaurants, exclusive member's clubs, famed hotels and a choice of independent dining and drinking spots.



WITHIN 5 MINS

- 
1
5 Hertford Street Club
 Impeccable decor and dazzling cuisine
- 
2
Coya
 Upscale Peruvian serving fresh fusion fare
- 
3
The White Horse
 Sophisticated wine-led pub in elevated surroundings
- 
4
Curzon Mayfair
 Iconic arthouse cinema with stylish bar
- 
5
Third Space
 Next generation gym with luxury training and classes

CONNECTIONS

- 

Green Park
 4 minute walk
 (Jubilee, Piccadilly & Victoria line)
- 

Bond Street
 10 minute walk
 (Jubilee, Central & Elizabeth line)
- 

London Bridge
 15 minutes
 (via Jubilee line)
- 

Euston
 12 minutes
 (via Victoria line)

7
HERTFORD ST

Contact the agents:

Joe Ellis
+44 7900 409 858
joe.ellis@eia-re.co.uk

Alex Kirk
+44 7763 934 271
ak@eia-re.co.uk

Maxim Vane Percy
+44 7867 780 332
mvp@eia-re.co.uk

A development by:

